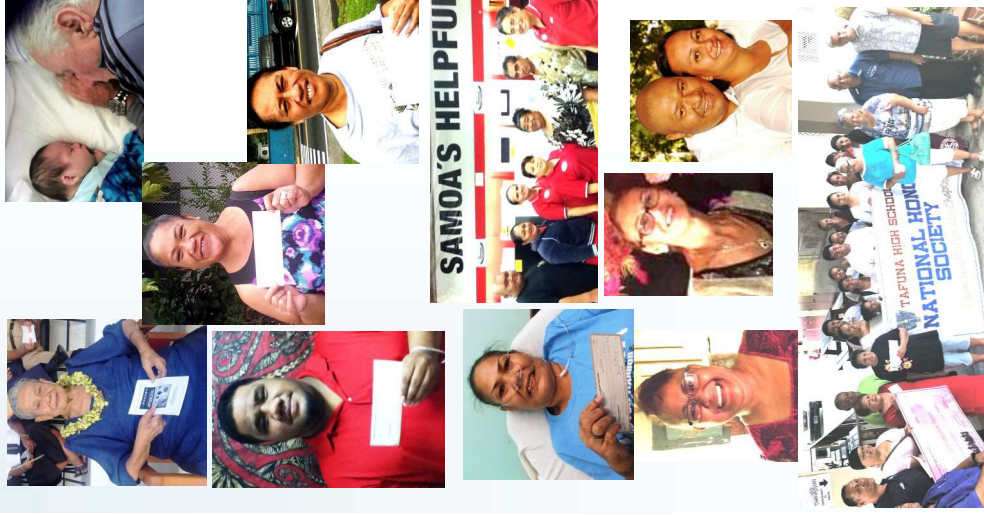


How To Apply For a Stipend

To apply for an annual \$500 stipend, the applicant must complete a **written application** and provide a current status of his or her **diagnosis** of cancer in the form of a doctor's note confirming the diagnosis, or copy of a medical record showing a cancer diagnosis. If the outcome of a test for cancer is a 'suspicious' result, or indicates a 'possible' malignancy it does not meet the requirements of a definitive diagnosis. For legal and administrative reasons, stipends cannot be awarded to applicants who have passed prior to application approval. The turn-around time is three days from submission to award.

Application Available at the Coalition Office



Cancer Patient Stipend Program



American Samoa Community Cancer Coalition

P.O. Box 1716 Pago Pago AS 96799
2nd Floor—Sa Iosia Building—Nu'uuli

Phone: 684-699-0110

www.asccancercoalition.org

E-mail: lmyscanlan@partnership.as

Follow us on Facebook!

Helping the people of American Samoa fight Cancer

Supported by the U.S. Department of the Interior grant D17AP00037



What is Tautai Lavea'i?

The literal translation is 'steersman' (Tautai) and 'to deliver' (Lavea'i). In this case, the 'patient navigator' or Tautai, steers the cancer patient through the maze that is our healthcare system, providing help so the patient can make an informed decision to act on his or her cancer diagnosis.

The **Goal** is to save lives from cancer by identifying barriers to care and helping the patient overcome them.

The **Scope** of Tautai Lavea'i begins with a cancer diagnosis and ends with the patient's decision to act on this diagnosis.

The Tautai aims to build trust and communicate with the patient and family members. The Tautai will answer questions, refer to services, and help the patient overcome obstacles. These can range from not understanding the diagnosis and treatment, to applying for travel documents and communicating with off-island healthcare providers.

The Tautai can also connect the patient to cancer survivors on-island who can provide one-on-one consultation. The Tautai will respect the patient's wishes, keep all information confidential, and act with compassion and empathy at all times.



What is the Cancer Coalition?

In 2005 a group of community members acted on their concern about the increasing number of Samoans being diagnosed with cancer. They started the American Samoa Community Cancer Coalition in 2006—a local non-profit organization of volunteers led by a Board of Directors who's mission is to 'help the people of American Samoa fight cancer'.

Where Does the Money Come From?

Cancer has touched the lives of many people in American Samoa—it is the second leading cause of death here. For this reason, we have no shortage of donors who generously support Coalition fundraisers such as the annual **Swing Into Action golf tournament**, the annual **Christmas ACE Angels** matching donation drive, and various fundraisers held by community service organizations and businesses like the Leone High School Green Club, Tafuna High School National Honor Society, and **Le Afi Energy's \$1-A-Tank**.

Every penny donated goes into the Stipend fund. No overhead or other expenses are paid. The program is run by Coalition volunteers! To help, please call the Coalition office at 699 -0110 or message us on Facebook!

